

THREAD TAILS & VAPOR TRAILS

Blue Angels Quilt

Designed by Kelly Gallagher-Abbott
www.jukeboxquilts.com www.navyquilts.com

Quilt made by Pat Alderman.

Fabrics by Thread Tails and Vapor Trails sponsor Robert Kaufman Fabrics



Skill Level

Beginner

All piecing uses an accurate scant 1/4" seam allowance.

Finished quilt: 43 1/2" wide x 48 1/2" tall

Finished blocks: 7" w x 8" h

Yardage

2 yards Kaufman Patriots Blue Angel Fabric ETK-11008-63 Sky (allows for proper orientation of borders and extra for fussy cutting jets)

1/2 yard Kaufman Artisan Batiks AMD-7000 5 Yellow

1 yard Kaufman Artisan Batiks AMD-7000 62 Indigo for sashing and binding

2 yards Kaufman Patriots ETK-11005-63 Sky for backing, piece to 48" wide x 56" tall

48" x 56" Hobbs batting

Additional fabric for sleeve and label if desired

Cutting Directions

Prior to cutting any of the Blue Angel fabric, cut two side borders 4 1/2" x 48 1/2" parallel to the selvage edge.

Cut top and bottom borders perpendicular to the selvage 35 1/2" x 4 1/2" .

35 1/2" x 4 1/2"	
35 1/2" x 4 1/2"	
Borders	
	4 1/2" x 48 1/2"
	4 1/2" x 48 1/2"



www.jukeboxquilts.com



www.navyquilts.com



www.robertkaufman.com



www.hobbsbondedfibers.com

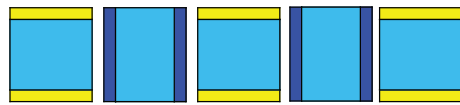
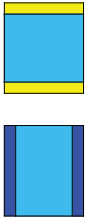
Copyright 2010 Kelly Gallagher-Abbott All Rights Reserved

Cut thirteen 7 1/2" w x 6 1/2" h horizontal blocks of Blue Angel fabric.

Cut 6 strips 1 1/2" x the width of the fabric from the yellow fabric. Cut these into twenty six 7 1/2" x 1 1/2" yellow strips. Sew these to the top and bottom of the horizontal blocks.

Cut twelve 5 1/2" w x 8 1/2" h vertical blocks of Blue Angel fabric.

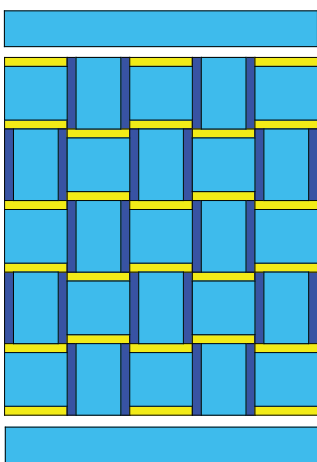
Cut 5 strips 1 1/2" x the width of the fabric from the blue fabric. Cut these into twenty four 1 1/2" x 8 1/2" blue strips. Sew these to the sides of the vertical blocks.



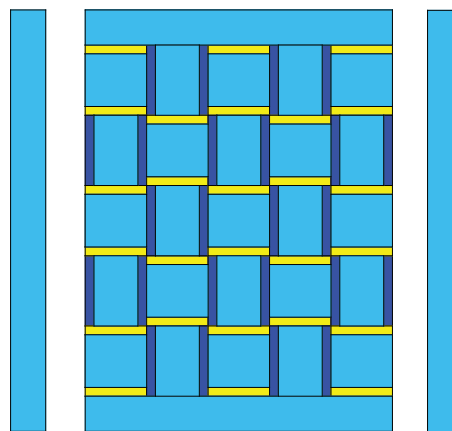
Row 1, 3, and 5



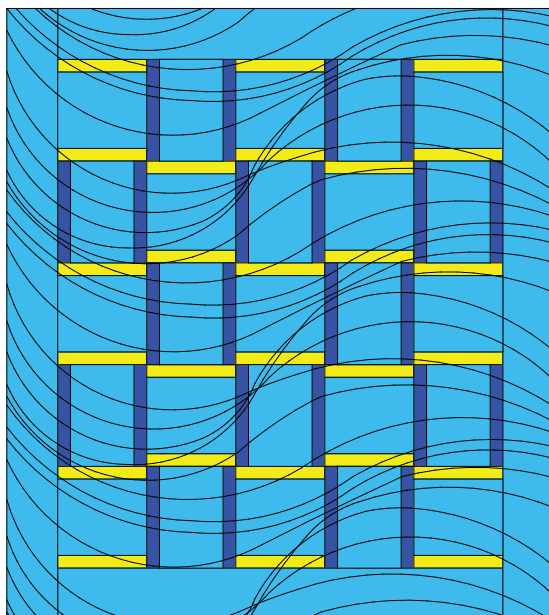
Row 2 and 4



Add top and bottom borders.



Add side borders.



Suggested quilting pattern.

Cut binding the width you prefer (we use 2 1/4") and piece end to end (using diagonal seams). Bind, add sleeve and label if desired.



www.jukeboxquilts.com



www.navyquilts.com



www.robertkaufman.com



www.hobbsbondedfibers.com

Copyright 2010 Kelly Gallagher-Abbott All Rights Reserved